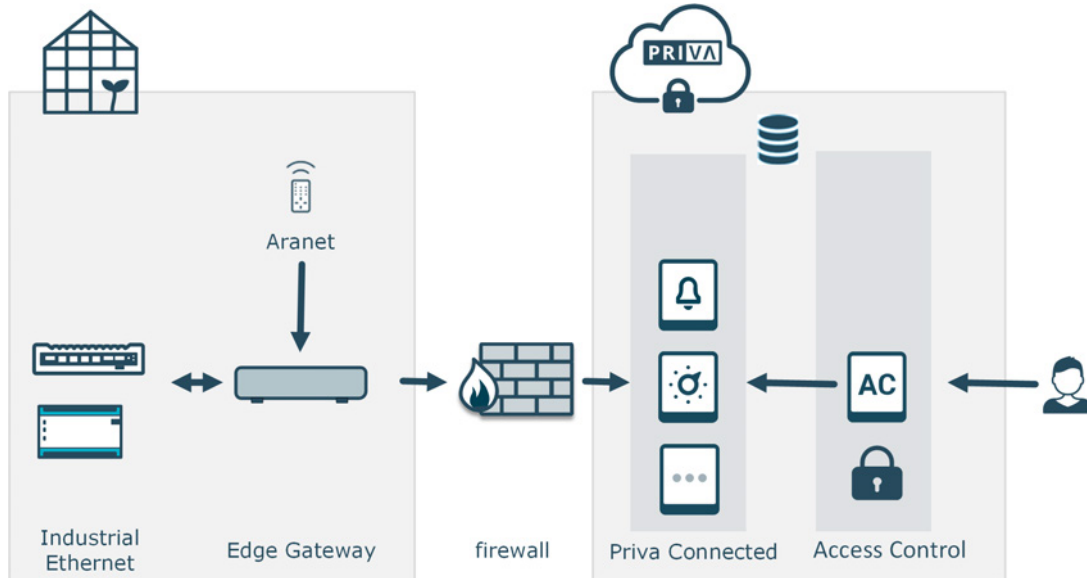


Installing and configuring Edge Gateway

The Edge Gateway enables secure communication between the Priva hardware (Connex, Compact CC and Compass) and the Priva Cloud for the use of Priva Connected. Install, register and configure the Edge Gateway in accordance with the steps in this document.



Step-by-step plan

1. Configuring the firewall (page 2)
 2. Installing and connecting the Edge Gateway (page 3)
 3. OPTIONAL: Configuring the Edge Gateway locally (page 4) *
- * Only perform this step if you have a local network (Internet) without DHCP.
4. Registering the Edge Gateway (page 5)
 5. Configuring the Edge Gateway (page 5)
 6. Done! And now? (page 5)

Before you begin, make sure you have the following rights in Access Control:

Installation & Maintenance: ✓ Manage Devices


1. Configuring the firewall

Enable communication between the Edge Gateway and the Priva Cloud by configuring the following in the firewall:

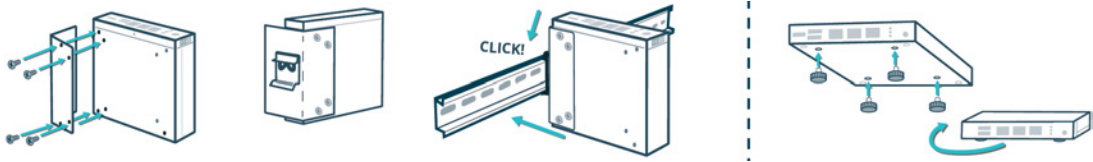
1. Release the following port numbers. The ports only use outgoing communication.
 - 67 (DHCP)
 - 443 (HTTPS)
 - 5671 (AMQP)
 - 5672 (AMQP)
 - 8883 (MQTT)
2. Release the following FQDNs (Fully Qualified Domain Names). You can choose between using wildcards (addresses starting with *) or releasing the complete FQDNs. The list of complete FQDNs is, however, dynamic; FQDNs may be added or changed in the future. Using wildcards is more maintenance-friendly, because the list of wildcards will change less often than the list of complete FQDNs.

Wildcard	FQDN
*.azurewebsites.net	prd-gps-service-wa.azurewebsites.net prd-gps-state-wa.azurewebsites.net prd-safefiletransferapi-we.azurewebsites.net
*.blob.core.windows.net	edgegatewayfirmware.blob.core.windows.net coprdffrontend2sawe.blob.core.windows.net prddevicemetadatas.blob.core.windows.net prdhdpstgwtelemetrysa.blob.core.windows.net prdinstallupdatesa.blob.core.windows.net prdprivaauditlogs.blob.core.windows.net prdsafefiletransfersawe.blob.core.windows.net
*.azure-devices.net	prd-priv-generic-ih.azure-devices.net
*.b2clogin.com	privaid.b2clogin.com
*.priva.com	accesscontrolapi.priva.com alarms.priva.com assetapi.priva.com auth.priva.com authorization.priva.com apps.priva.com catalogapi.priva.com connect.priva.com cr.priva.com cr-data-westeuropa.priva.com gps.priva.com iam.priva.com installationandmaintenance.priva.com local-auth-provisioning.priva.com my.priva.com notificationcenter.priva.com operator.priva.com scheduler.priva.com state.priva.com tenantapi.priva.com
N/A	mcr.microsoft.com priva.azurecr.io priva.westeurope.data.azurecr.io global.azure-devices-provisioning.net

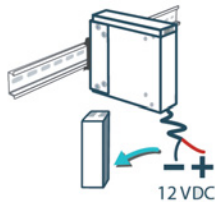
2. Installing and connecting the Edge Gateway

 Never connect the Priva network and the Internet to the same LAN port. There are security risks if the Priva network is not separated from the Internet.

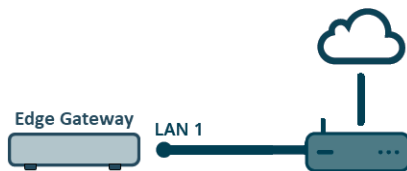
1. Mount the gateway on the DIN rail or place it on the rubber feet.



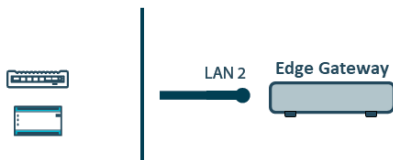
2. Connecting the power supply:
 - a. Connect the power cable to the Gateway.
 - b. Connect the power cable to the voltage converter (article number 3659053).
Instead of a voltage converter you can also use a 12 VDC adapter, see the Priva price list.
 - c. Connect the voltage converter to the 24 VDC system power supply in the housing.
 - d. If the gateway does not switch on automatically (see power LED), press the power on/off button.



3. Connect LAN 1 to the Internet, possibly via a switch.



4. Connect LAN 2 to the Priva network.



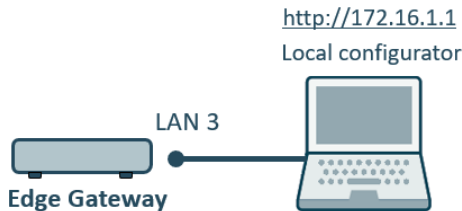
5. Check whether the LEDs of the LAN ports light up:
 - The right-hand LED indicates whether the gateway has been properly connected to the Priva network and should light continuously green or orange.
 - The left-hand LED indicates whether there is network activity and should flash orange.



3. OPTIONAL: Configuring the Edge Gateway locally

! Only perform the steps in this section if you have a local network (Internet) **without DHCP***. If this is not the case, continue with [4. Registering the Edge Gateway \(page 5\)](#).

* DHCP = protocol used for automatically assigning IP addresses to the devices on the network



i To configure the gateway locally, connect your computer to the service port (LAN 3) of the gateway.

Access the local configuration application:

1. Configure the Ethernet port of your computer to:
IP address: 172.16.1.*** (where *** is a free number between 2 and 254)
Subnet mask: 255.255.0.0
2. Connect the Ethernet port of your computer to LAN 3 (service port) on the gateway.
3. Open a browser on your computer and go to <http://172.16.1.1>
4. Log in with:
Username: Supervisor
Password: 1234
Note: the user name 'Supervisor' begins with a capital letter.
The user management of the local configuration application will open.
5. Create one or more users.
6. Log out.
7. Log in with one of the user accounts you have just created.
The local configuration application will open.

Configure the gateway in the local configuration application:

1. Configure LAN 1 (internet):
If you have a local network **without DHCP**, disable DHCP and enter a free IP address¹, the subnet mask and the default gateway.
2. Configure LAN 2 (Priva network):
Enter a free IP address¹ within the Priva network and enter the subnet mask of the Priva network.
Note: Do not enter the default gateway for LAN 2.
3. If you have a local time server, enter the IP address of this server. By default, the public NTP server is set to 0.pool.ntp.org.

! ¹ Do not use the IP address range 172.23.105.0/24. This range is already used internally in the Edge Gateway.

i It is already possible to configure proxy settings. These settings are, however, not yet operational.

4. Registering the Edge Gateway



Registering the gateway means that you assign the gateway to a site.

Register the gateway in Installation & Maintenance:

1. Scan the QR code on the gateway (or go to the URL below) and follow the steps in Installation & Maintenance to register the gateway.

5. Configuring the Edge Gateway



If you have configured the gateway locally via the service port (LAN 3), you will already have performed the steps marked with an asterisk (*) in the local configuration application.

Configure the gateway in Installation & Maintenance:

1. * Configure LAN 2 (Priva network):
Enter a free IP address¹ within the Priva network and enter the subnet mask of the Priva network.
Note: Do not enter the default gateway for LAN 2.
2. Set the time zone.
3. * If you have a local time server, enter the IP address of this server. By default, the public NTP server is set to 0.pool.ntp.org.
4. Make sure the process computers have been configured in Installation & Maintenance.



¹ Do not use the IP address range 172.23.105.0/24. This range is already used internally in the Edge Gateway.

6. Done! And now?

The Edge Gateway is now ready for use! The Priva Connected services can now be used.

Give users access to Priva Connected in Access Control:

With Access Control you can give users rights to use Priva Connected for the site in which this Edge Gateway is located.